

Primary Residences		
Purchase & Rate/Term		
Credit Score	Loan Amount	Max LTV/CLTV
720	\$1.0M	90 (Purchase Only)
700	\$3.0M	80
680	\$2.0M	85 <sup>1</sup> (Purchase Only)
	\$2.5M	80
660	\$2.0M	80
Cash Out		
Credit Score	Loan Amount	Max LTV/CLTV
720	\$2.0M	80
	\$2.5M	75
	\$3.0M	70
700	\$1.5M	80
	\$2.0M	75
	\$2.5M	70
660	\$1.5M	75
	\$2.0M	70
2 <sup>nd</sup> Homes		
Purchase & Rate/Term		
Credit Score	Loan Amount	Max LTV/CLTV
720	\$1.5M	85 <sup>1</sup> (Purchase Only)
700	\$2.5M	80
680	\$1.0M	85 <sup>1</sup> (Purchase Only)
	\$2.0M	80
	\$2.5M	75
660	\$1.0M	80
	\$1.5M	75
Cash Out		
Purchase & Rate/Term		
Credit Score	Loan Amount	Max LTV/CLTV
720	\$2.0M	75
	\$2.5M	70
680	\$1.5M	75
	\$2.0M	70
660	\$1.5M	70
	\$2.0M	65

<sup>1</sup> 40 Yr Interest Only not permitted





Investments		
Purchase & Rate/Term		
Credit Score	Loan Amount	Max LTV/CLTV
700	\$2.5M	80 (Purchase Only)
680	\$2.0M	80 (Purchase Only)
660	\$1.5M	80 (Purchase Only)
	\$2.0M	75

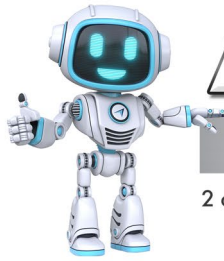
  

Cash Out		
Purchase & Rate/Term		
Credit Score	Loan Amount	Max LTV/CLTV
720	\$2.5M	70
680	\$2.0M	75
660	\$1.5M	70

PROGRAM OVERVIEW	
<b>Housing History</b>	0x30x12
<b>Credit Event Seasoning</b>	BK/FC/SS/DIL/NOD/Mod: 48+ Months
<b>Occupancy</b>	Owner Occupied, 2 <sup>nd</sup> Home, Investment
<b>Product Types</b>	5/6 ARM, 30 Yr Fixed, 40 Yr Fixed (IO)
<b>Interest Only</b>	<ul style="list-style-type: none"> <li>30yr and 40yr term available (Fixed or ARM); 10yr IO period</li> <li>Min FICO 700</li> <li>Purchase: Max LTV/CLTV 85%</li> <li>Refinance: Max LTV/CLTV 80%</li> </ul>
<b>Loan Amounts</b>	<ul style="list-style-type: none"> <li>Min: \$125K               <ul style="list-style-type: none"> <li>LTV/CLTV &gt;85%: Min loan amount \$200K</li> </ul> </li> <li>Max: \$3.0M               <ul style="list-style-type: none"> <li>Max \$2.0M for non-California 2-4 unit investments</li> </ul> </li> </ul>
<b>Loan Purpose</b>	Purchase, Rate/Term, and Cash Out
<b>First-Time Home Buyer</b>	<ul style="list-style-type: none"> <li>Max LTV/CLTV 85%</li> <li>Interest-only ineligible</li> </ul>
<b>Property Type</b>	<ul style="list-style-type: none"> <li>Condo: Max LTV/CLTV 85%</li> <li>3-4 units eligible as investment properties only</li> </ul>
<b>Cash Out</b>	Max cash-in-hand: <ul style="list-style-type: none"> <li>LTV/CLTV &gt;=65%: \$500K</li> <li>LTV/CLTV &gt;50%-&lt;65%: \$750K</li> <li>LTV/CLTV &lt;=50%: \$1M</li> </ul>
<b>Appraisals</b>	<ul style="list-style-type: none"> <li>2nd appraisal required for:               <ul style="list-style-type: none"> <li>Loan amounts &gt;=\$2.0M and LTV/CLTV &gt;65%</li> <li>HPML property flips</li> </ul> </li> </ul>

Revision: 10/31/2022

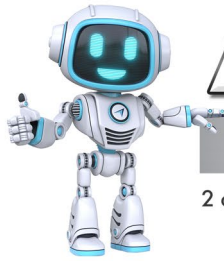




PROGRAM OVERVIEW	
<b>Rural Property</b>	<ul style="list-style-type: none"> <li>Investment properties not permitted</li> <li>Max LTV/CLTV 75%</li> <li>2<sup>nd</sup> home: Max LTV/CLTV 70%</li> </ul>
<b>Income <u>Full Doc</u></b>	<b>Full</b> <ul style="list-style-type: none"> <li>Wage/Salary: 2 Yrs. W2s or 1040 Tax Returns, YTD Paystub, VVOE, or 1099</li> <li>Self-employed: 2 Yrs. Tax Returns (Business, Personal), YTD P&amp;L, or 1099</li> </ul>
	<b>Streamlined</b> <ul style="list-style-type: none"> <li>1 Yr. W2s or 1040 Tax Returns, W2 Transcripts, YTD Paystub, VVOE, or 1099</li> <li>Self-employed: 1 Yr. Tax Return (Business, Personal), YTD P&amp;L, or 1099</li> </ul>
	<b>Asset Utilization</b> <p>Lesser of:</p> <ol style="list-style-type: none"> <li>1. \$1.0M in qualified assets OR</li> <li>2. 1.25x loan amount, but never less than \$450K</li> </ol>
<b>Income <u>Alt Doc</u></b>	<b>12M Bank Statements</b> <ul style="list-style-type: none"> <li><b>Personal:</b> 12 months consecutive</li> <li><b>Business:</b> Expense Ratio (Fixed) or Expense Ratio (3<sup>rd</sup> Party)</li> </ul>
	<b>12M P&amp;L</b> <ul style="list-style-type: none"> <li>CPA/EA-Prepared</li> <li>Max 80% LTV</li> <li>Min 660 FICO</li> <li>Requires 2-month Bank Statements</li> </ul>
<b>Income Restrictions</b>	Asset Utilization <ul style="list-style-type: none"> <li>Max LTV/CLTV 80%</li> <li>Investment: Max LTV/CLTV 65%</li> <li>Cash out: Max LTV/CLTV 60%</li> </ul>
<b>Credit Score</b>	Middle of 3 or lower of 2 <u>for primary wage earner</u>
<b>Tradelines</b>	<ul style="list-style-type: none"> <li>Min 2 tradelines with activity in the last 24 months that show a 12-month history</li> <li>Eligible tradelines cannot have any derogatory history in previous twenty-four (24) months</li> <li>Current housing not reporting on credit can be considered an open trade if supported by bank records (canceled checks/debits)</li> <li>Authorized user accounts cannot satisfy tradeline requirements</li> </ul>
<b>Document Age</b>	120 days
<b>Reserves</b>	<ul style="list-style-type: none"> <li>Loan amount ≤ \$2.0M: 6 months</li> <li>Loan amount &gt; \$2.0M: 9 months</li> <li>Cash out may be used for reserves</li> </ul>
<b>DTI</b>	<ul style="list-style-type: none"> <li>45% for LTV/CLTV &gt;85%</li> <li>50% for LTV/CLTV ≤ 85%</li> </ul>
<b>Gift Funds</b>	<ul style="list-style-type: none"> <li>Not permitted for 2<sup>nd</sup>/NOO</li> <li>Not permitted with Asset Utilization</li> <li>Min borrower contribution (documented but not required to use):               <ul style="list-style-type: none"> <li>○ LTV/CLTV &gt; 80%: 10%</li> <li>○ LTV/CLTV ≤ 80%: 5%</li> </ul> </li> </ul>
<b>Prepayment Penalty – Investment Property Only</b>	<ul style="list-style-type: none"> <li>Permitted up to 5 years, subject to applicable laws/regulations</li> <li>Penalty is 5% of the amount prepaid</li> </ul>

Revision: 10/31/2022





# *FULL/ALT-DOC*

## PLATINUM

2 or 1 Year Tax Returns • Bank Statements • 1099 • P&L • Asset Utilization

Revision: 10/31/2022



Equal Housing Lender | Copyright © 2022 Bluepoint Mortgage | 4000 MacArthur Blvd., West Tower – 7th Floor, Newport Beach, CA 92660 | 877.267.1056 | NMLS ID# 320004, BRE# 01403107. Program rates and parameters are subject to change without notice. All loans must satisfy BluePoint Mortgage underwriting guidelines. Additional terms and conditions may apply. Intended for use by real estate and lending professionals only and not for distribution to consumers.